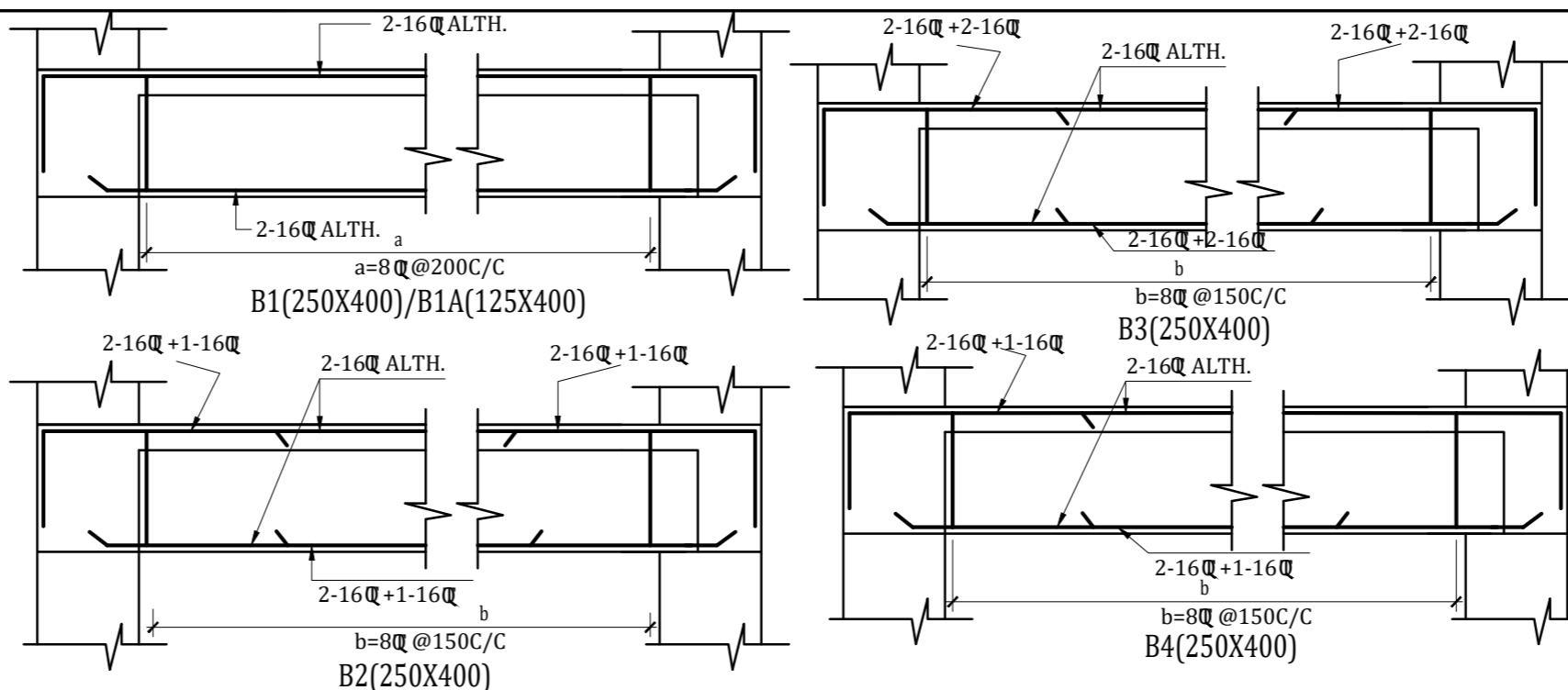


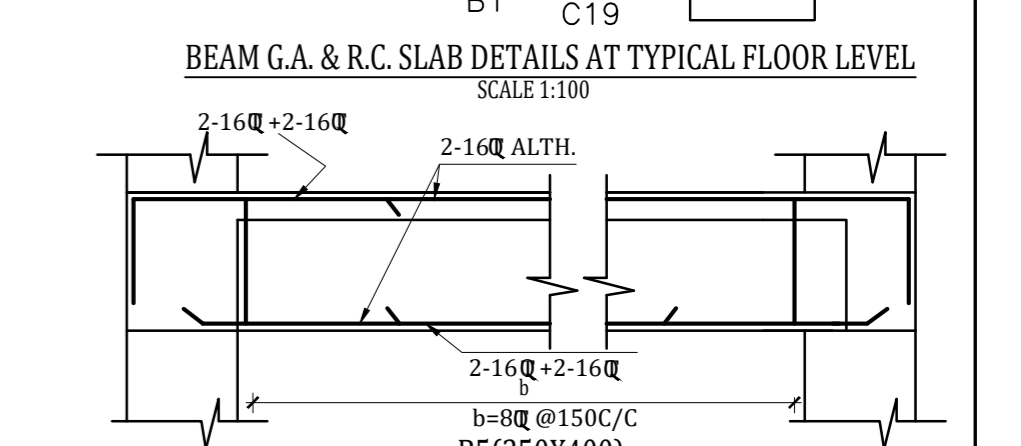
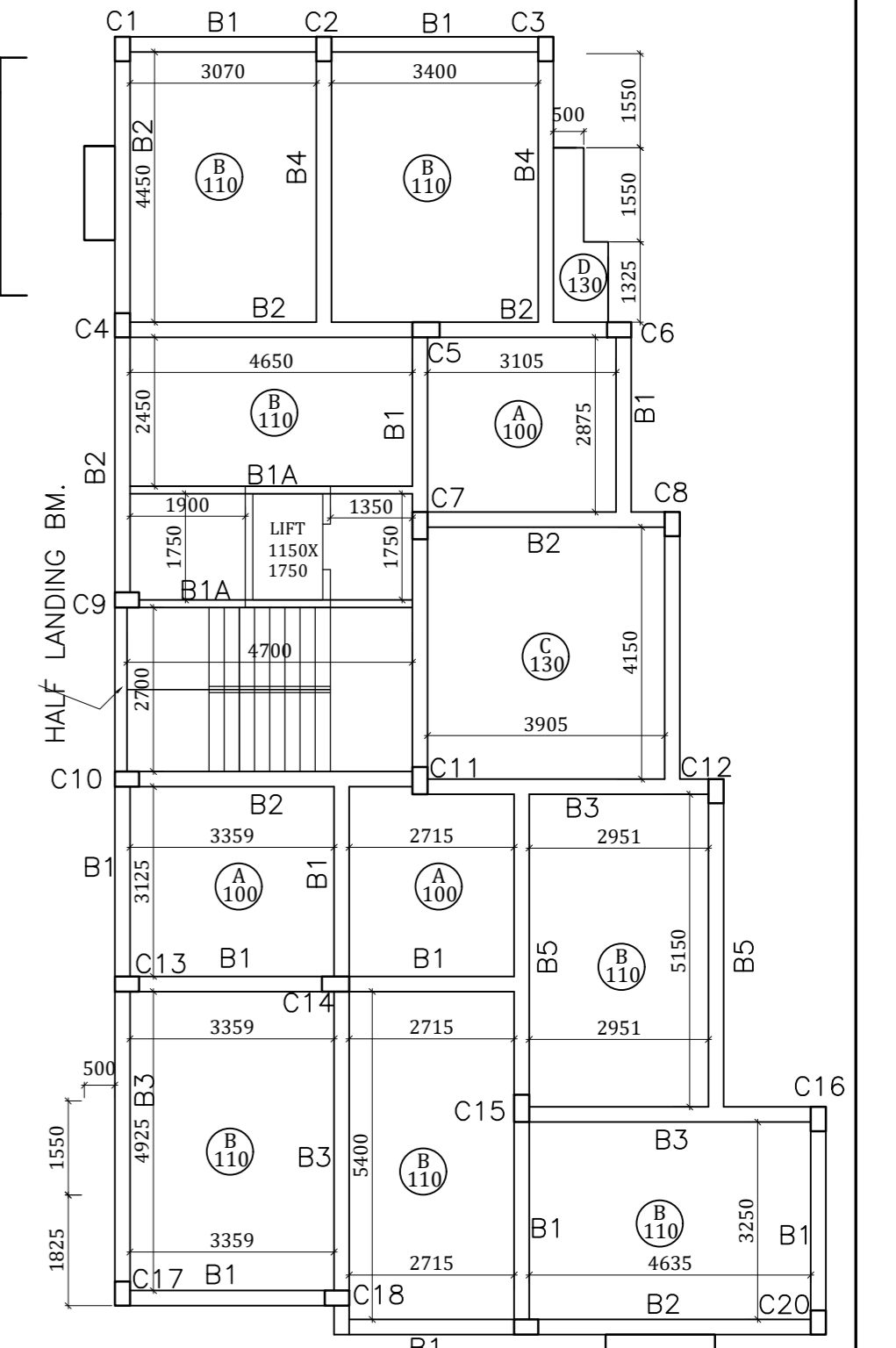
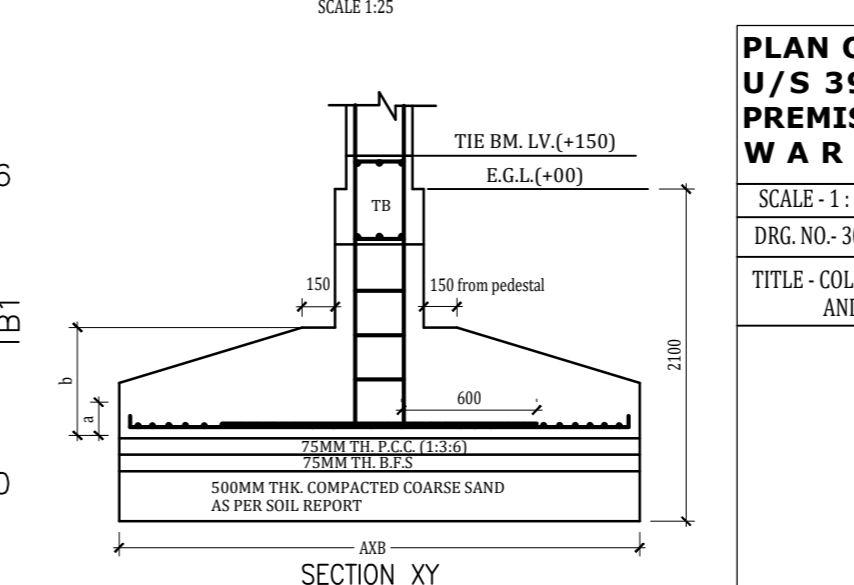
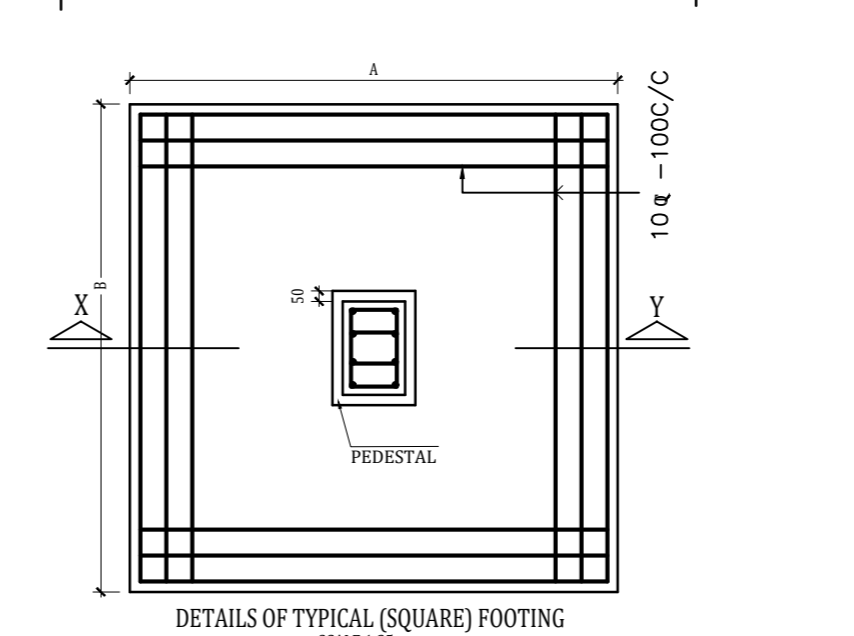
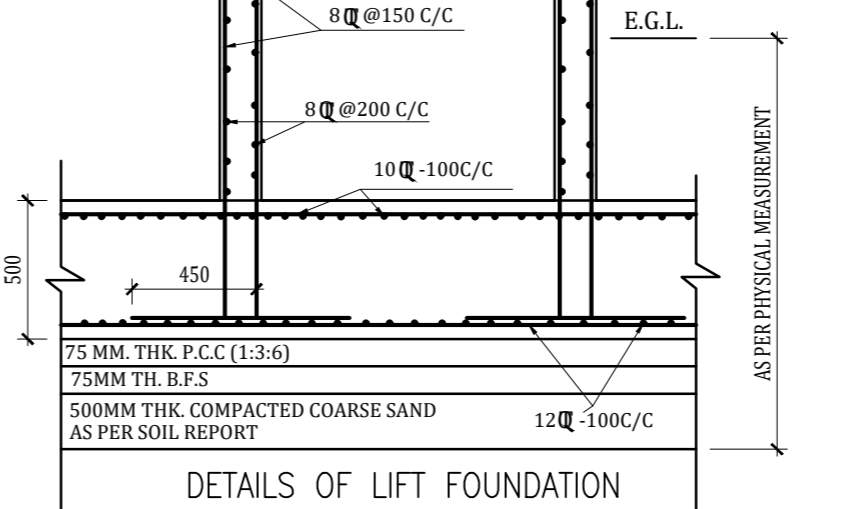
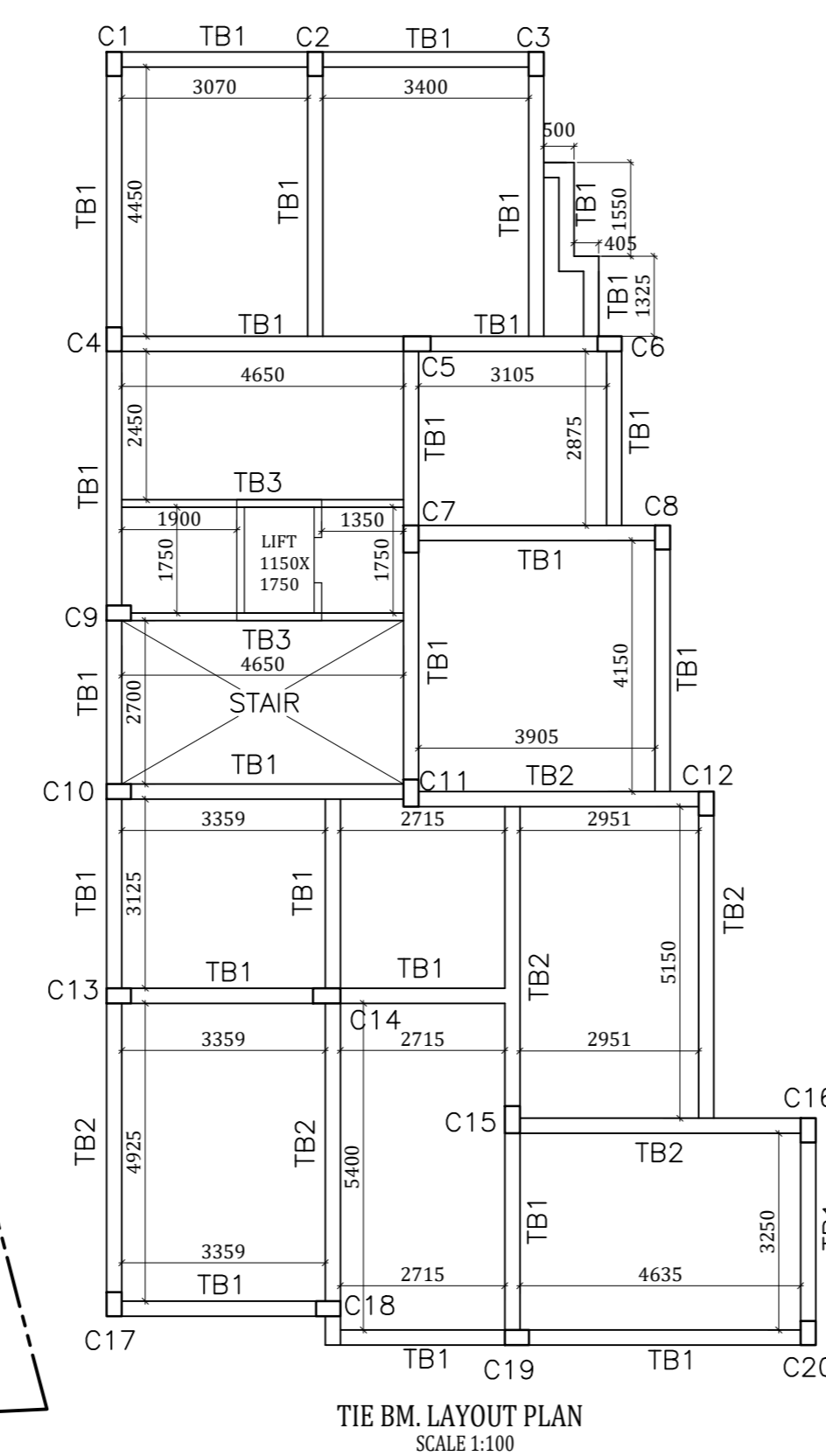
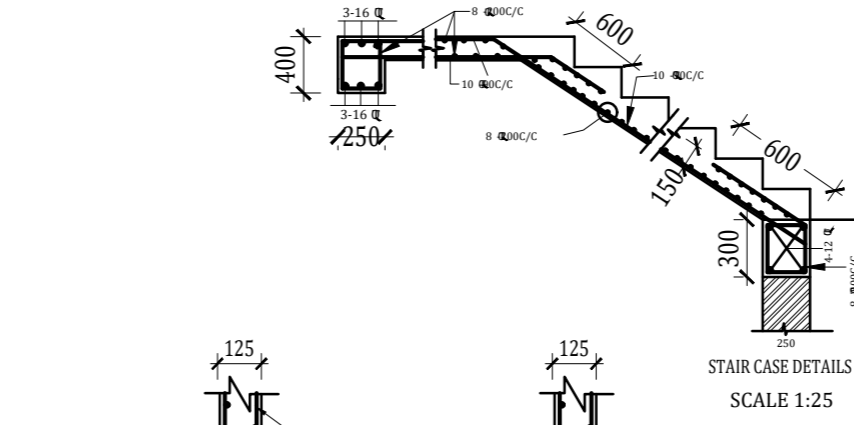
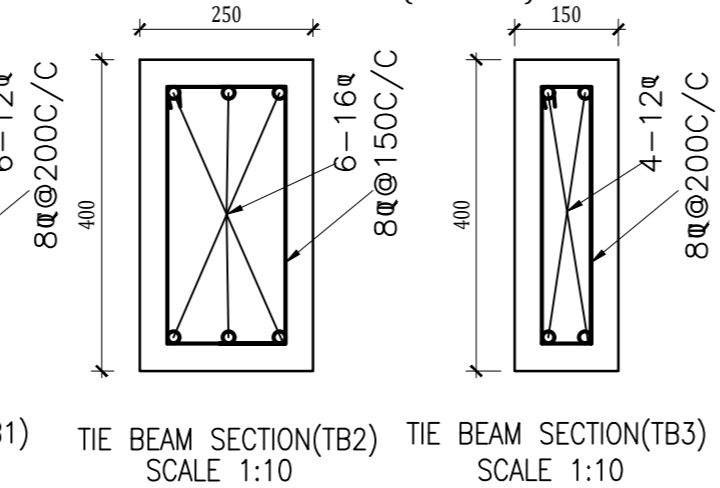
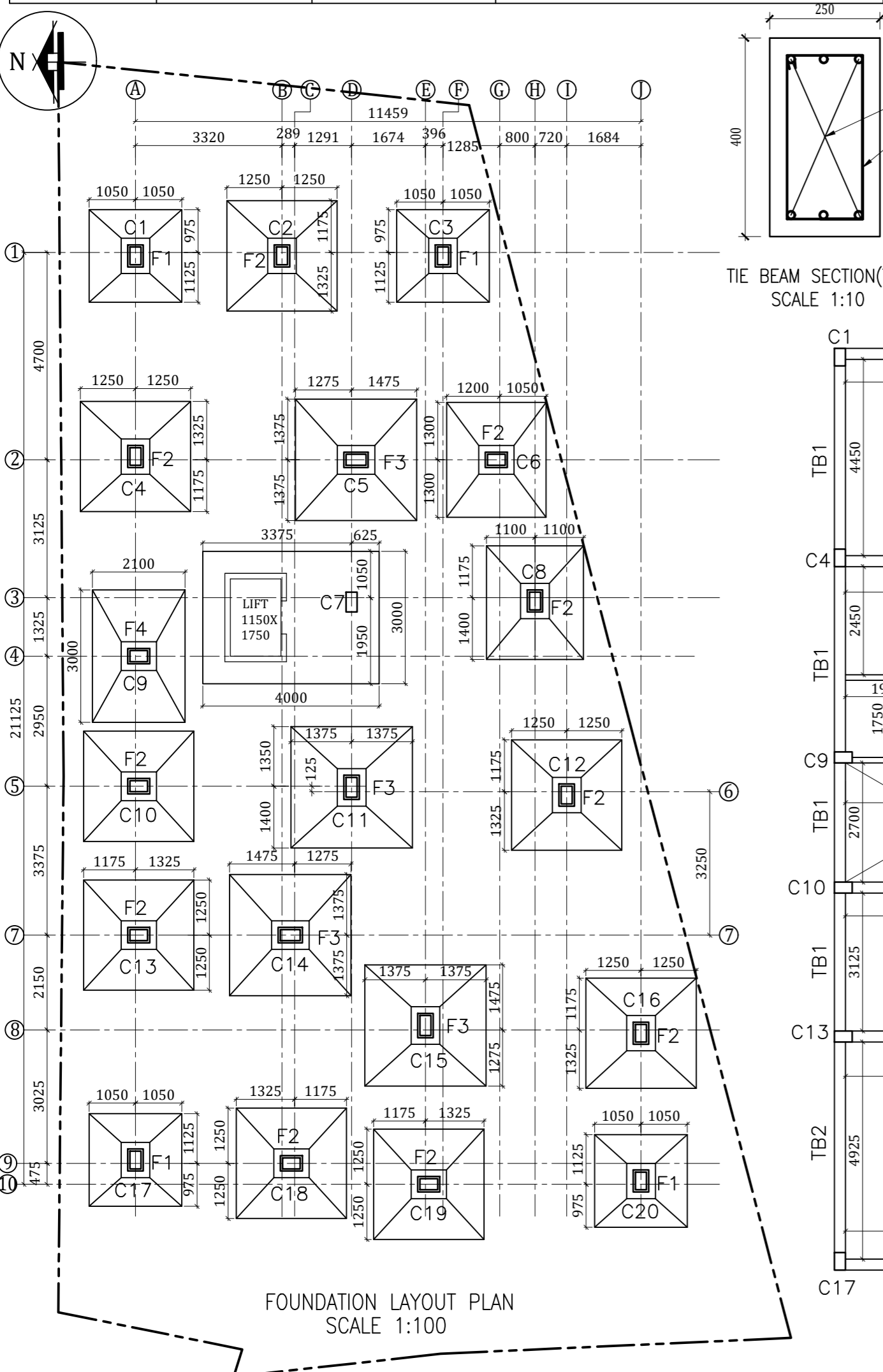
COLUMN CHART						
COLUMN GROUP	COLUMN NO.	GR.F/1ST.F	2ND	3RD	PEDESTAL	LINK UP BAR
I	C1,C3,C17,C20	250X400 6-16 $\phi$	250X400 4-16 $\phi$ +2-12 $\phi$	250X400 4-16 $\phi$		
II	C2,C4,C8,C8,C9 C10,C12,C13,C16 C18,C19	250X400 8-16 $\phi$	250X400 4-16 $\phi$ +4-12 $\phi$	250X400 8-12 $\phi$	350X500	8 $\phi$ @ 200C/C
III	C5,C7,C11 C14,C15	250X450 8-16 $\phi$	250X450 4-16 $\phi$ +4-12 $\phi$	250X450 8-12 $\phi$	350X550	

FOUNDATION CHART			
FOOTING TYPE	SECTION AXB	DEPTH b to a	REINFORCEMENT
F1	2100X2100	450 TO 200	10 $\phi$ -100C/C B/WAYS
F2	2400X2400	500 TO 200	10 $\phi$ -100C/C B/WAYS
F3	2750X2750	600 TO 200	10 $\phi$ -100C/C B/WAYS
F4	3000X2100	500 TO 200	LONG DIR.- 12 $\phi$ -100C/C SHORT DIR.- 10 $\phi$ -100C/C



SLAB CHART					
SLAB MKD.	SLAB DEPTH	MIDSPAN STEEL		SUPPORT STEEL	
		SHORTER DIR.	LONGER DIR.	SHORTER DIR.	LONGER DIR.
A	100	8 $\phi$ @150C/C	8 $\phi$ @150C/C	8 $\phi$ @150C/C	8 $\phi$ @150C/C
B	110	8 $\phi$ @150C/C	8 $\phi$ @150C/C	8 $\phi$ @150C/C	8 $\phi$ @150C/C
C	130	8 $\phi$ @150C/C	8 $\phi$ @150C/C	8 $\phi$ @150C/C	8 $\phi$ @150C/C
D	130	CANTILEVER SLAB		MAIN - 8 $\phi$ @100C/C	BINDER - 8 $\phi$ @200C/C

NOTE- ALL BINDERS WILL BE 8 $\phi$ @300C/C UNLESS OTHERWISE MENTIONED



**PLAN OF G+III STORIED (12.450 MT HEIGHT) RESIDENTIAL BUILDING U/S 393A OF K.M.C ACT 1980 AND K.M.C BUILDING RULE 2009, AT PREMISE NO. 258, AJANTA ROAD, KOLKATA-700 075, P.S-SURVEY PARK, WARD NO. 104, UNDER BOROUGH NO. XI, K.M.C.**

SCALE - 1:100  
DRG. NO. - 30, KALI/WD/ST-01  
TITLE - COLUMN CENTER LINE, FOUNDATION AND TIE BEAM DETAILS

ISSUED TO SITE:	FOR ADVANCE INFORMATION:	NOTES:- 1) ALL DIMENSIONS ARE IN MM. 2) GRADE OF CONCRETE M20 3) GRADE OF STEEL Fe 500 4) COVER AGAINST MAIN REINFORCEMENT COLUMN- 40 FOUNDATION-50 SLAB- 15 BEAM-25 5) LAP LENGTH COLUMN= 40X DIA. OF BAR SLAB,BEAM=50X DIA. OF BAR 6) BEARING CAPACITY OF SOIL IS TAKEN AS 7.5 T/SQM.
2. PRELIMINARY COPY:		
3. FOR CONSTRUCTION:		